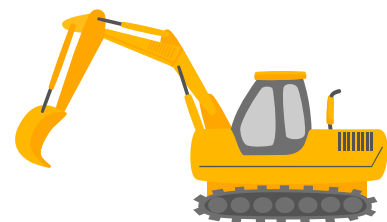
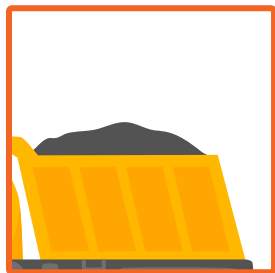


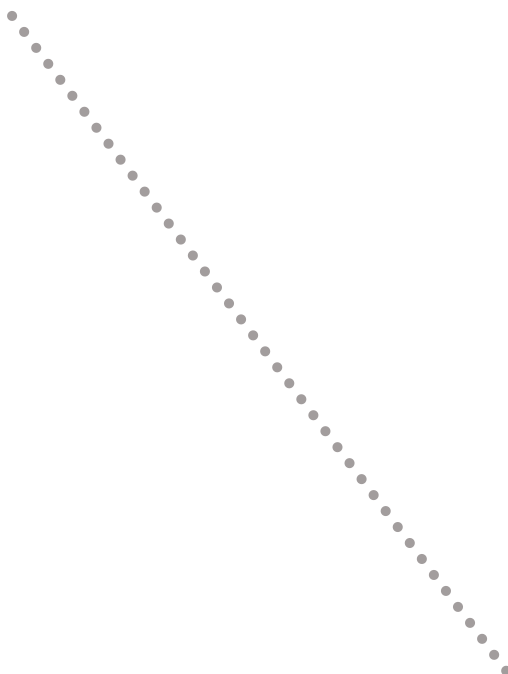
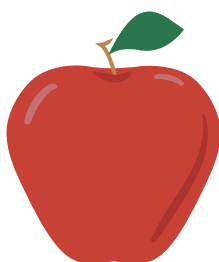
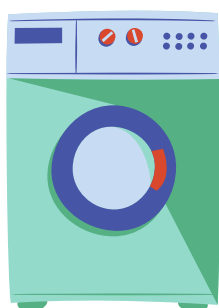
# Match Parts to Wholes

Look at the pictures in each square. Each contains a part of one of the pictures on the right. Draw a line to connect each part with its picture.



# This is the half of that

Match the half objects with their completed ones by drawing a line



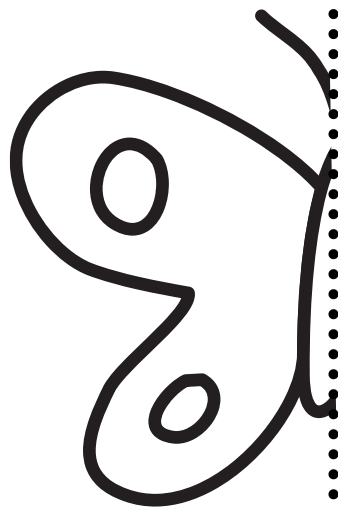
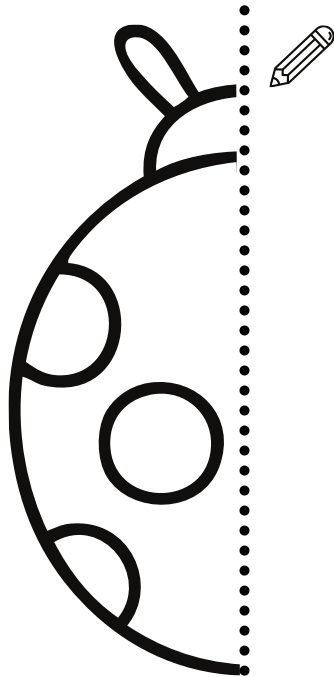
# Complete The Half

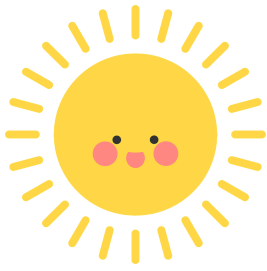
Let's Match the Animals with the Other Half



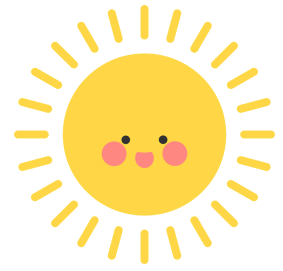
# Complete the Bugs

Draw the other half of each insect and then color it



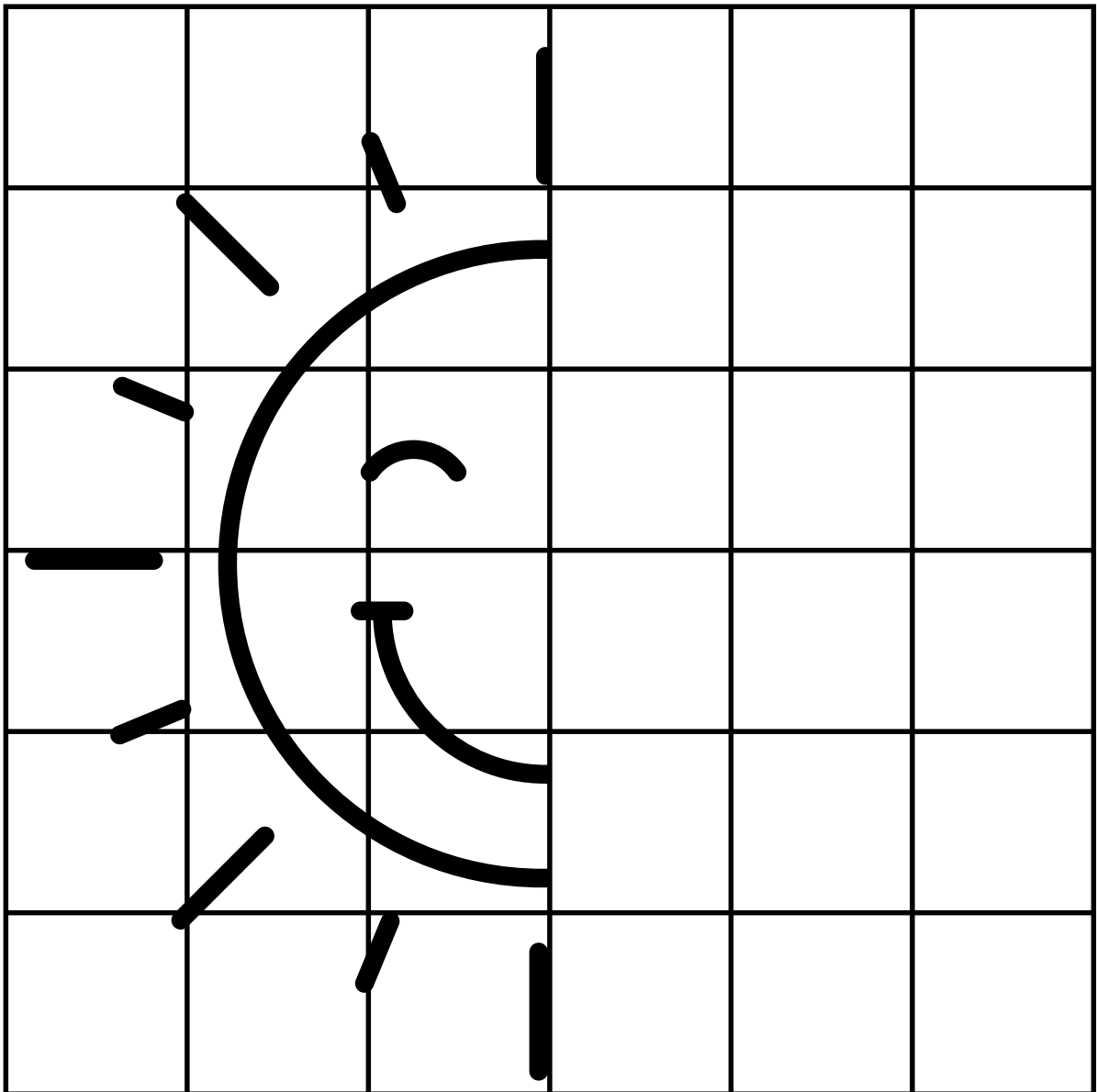


# Sunshine



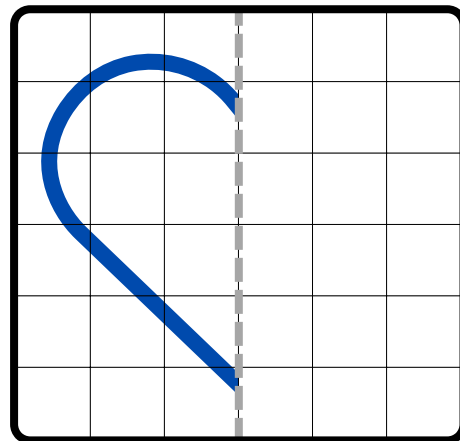
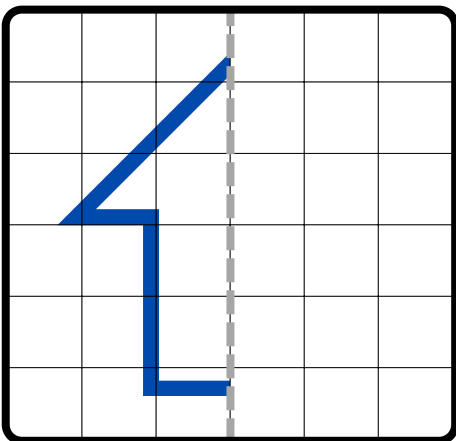
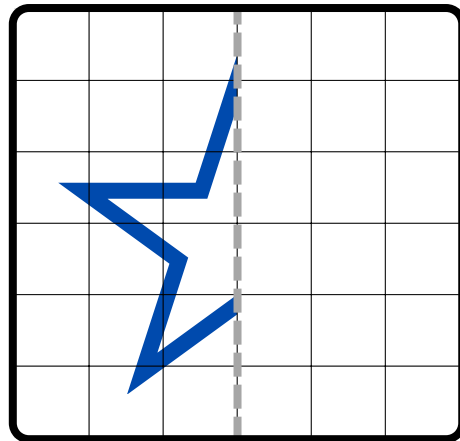
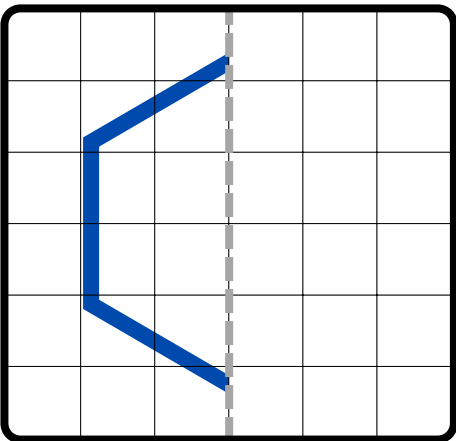
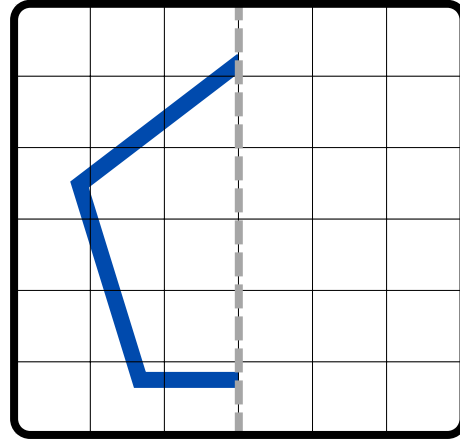
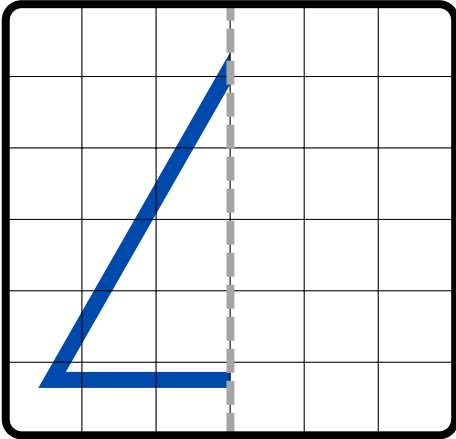
## Symmetry Practice

Complete the drawing of the happy sun using the grid.



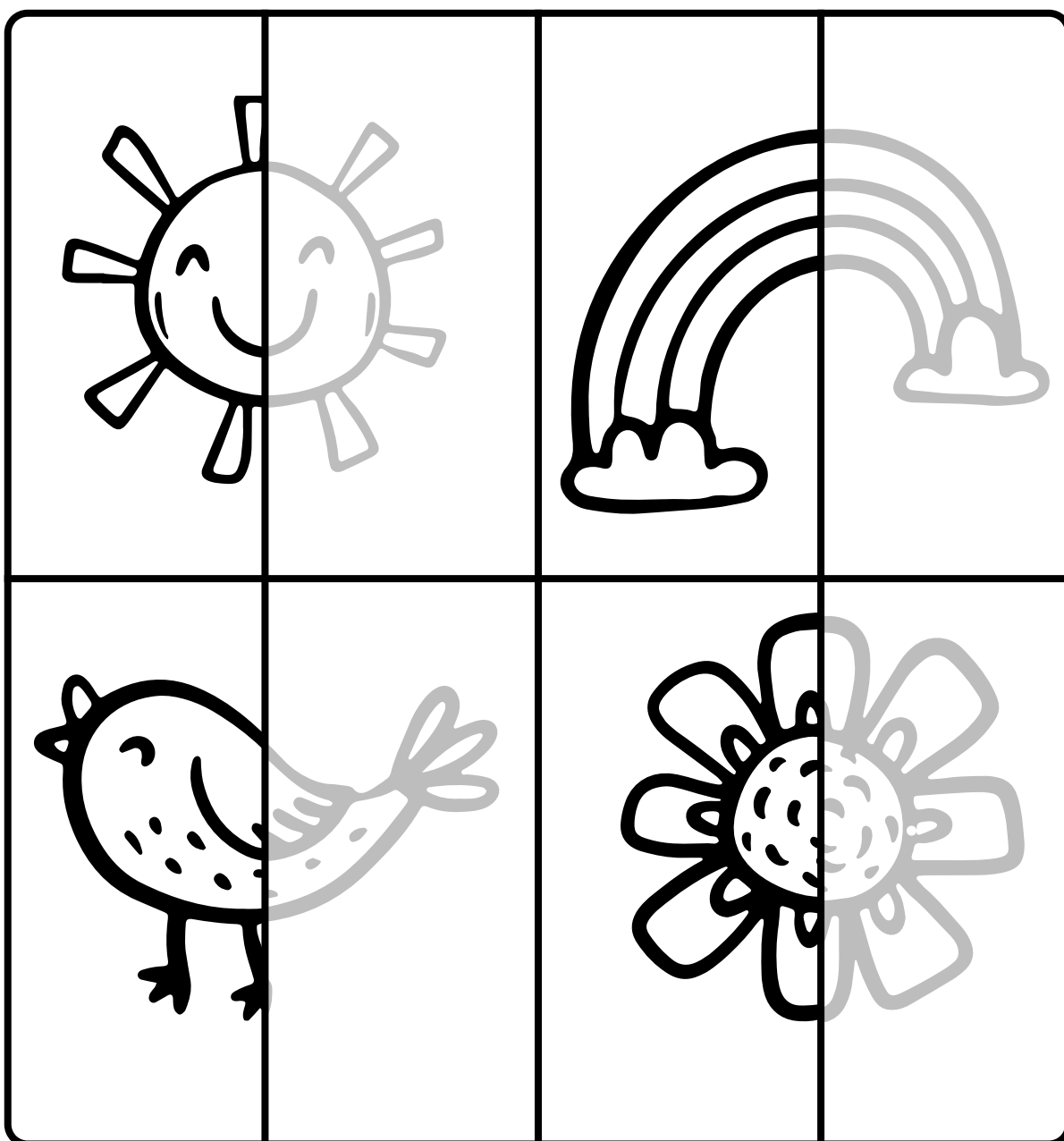
# REFLECTED SYMMETRY

Draw the reflection of the other half of the 2-D shapes, using the vertical line of symmetry.



# Spring Activity

Fill in the missing parts of the pictures by drawing and colouring.



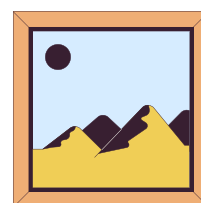
# MATCH THE LETTERS TO THE PICTURES



DIRECTION :

Draw a line to connect each letter to the picture that starts with that letter.

D



U



S



P



T

